

# PRODUCT INFORMATION PACKET

**marathon**<sup>®</sup>  
Motors

Model No: 365TSTDS6074  
Catalog No: U450A  
75,1800,DP,365TSC,3/60/230/460 PWS/YD  
Open Drip Proof (ODP)



Regal and Marathon are trademarks of Regal Beloit Corporation or one of its affiliated companies.  
©2018 Regal Beloit Corporation, All Rights Reserved. MC017097E

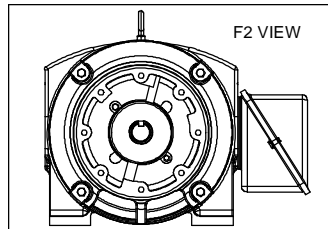
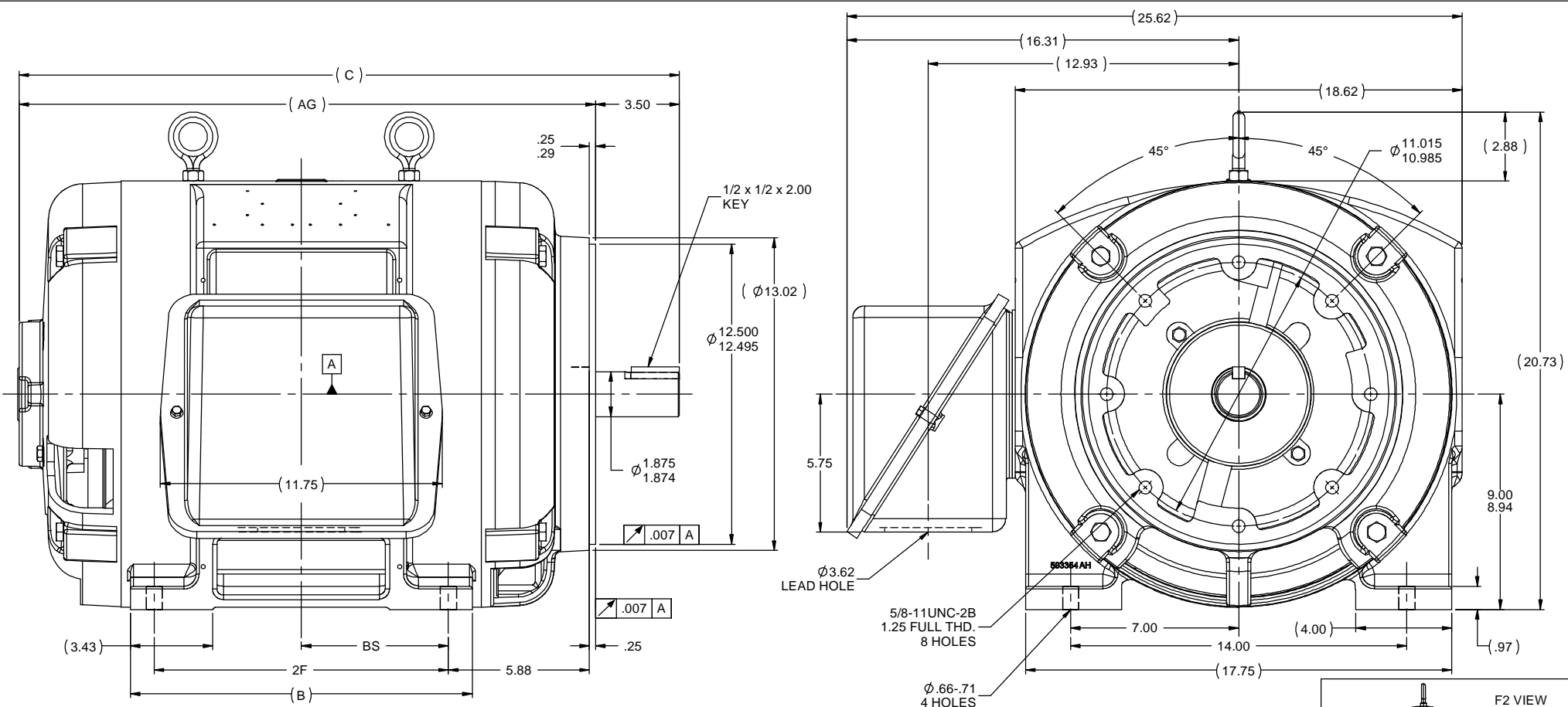
**REGAL**<sup>®</sup>

### Nameplate Specifications

Output HP	<b>75 Hp</b>	Output KW	<b>56.0 kW</b>
Frequency	<b>60 Hz</b>	Voltage	<b>230/460 V</b>
Current	<b>174.0/87.0 A</b>	Speed	<b>1780 rpm</b>
Service Factor	<b>1.15</b>	Phase	<b>3</b>
Efficiency	<b>95 %</b>	Duty	<b>Continuous</b>
Insulation Class	<b>F</b>	Design Code	<b>B</b>
KVA Code	<b>G</b>	Frame	<b>365TSC</b>
Enclosure	<b>Drip Proof</b>	Overload Protector	<b>No</b>
Ambient Temperature	<b>40 °C</b>	Drive End Bearing Size	<b>6312</b>
Opp Drive End Bearing Size	<b>6312</b>	UL	<b>Recognized</b>
CSA	<b>Y</b>	CE	<b>Y</b>
IP Code	<b>12</b>		

### Technical Specifications

Electrical Type	<b>Squirrel Cage Induction Run</b>	Starting Method	<b>Part Wdg Start Low Volt Only &amp; Wye Start Delta Run</b>
Poles	<b>4</b>	Rotation	<b>Reversible</b>
Mounting	<b>Rigid base</b>	Motor Orientation	<b>Horizontal</b>
Drive End Bearing	<b>Ball</b>	Opp Drive End Bearing	<b>Ball</b>
Frame Material	<b>Cast Iron</b>	Shaft Type	<b>TS</b>
Overall Length	<b>27.5 in</b>	Frame Length	<b>15.00 in</b>
Shaft Diameter	<b>1.875 in</b>	Shaft Extension	<b>3.5 in</b>
Assembly/Box Mounting	<b>F1/F2 Capable</b>		
Outline Drawing	<b>B-SS508618-1500</b>	Connection Diagram	<b>A-EE7308AA</b>



NOTES:  
 1. CONDUIT BOX CAN BE ROTATED IN 90° STEPS.  
 2. CONDUIT BOX CAN BE MOUNTED ON OPPOSITE SIDE BY REMOVING BRACKETS AND TURNING FRAME 180°.  
 3. NAMEPLATES TO BE READ FROM CONDUIT BOX SIDE OF MOTOR.

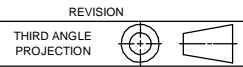
(B-SS509469)



DRAWN	TLB 02-04-1988
CHK	FG 02-04-1988
APPR	ML 02-04-1988
SCALE	1:4
REF	
FMF	
PAGE	OF

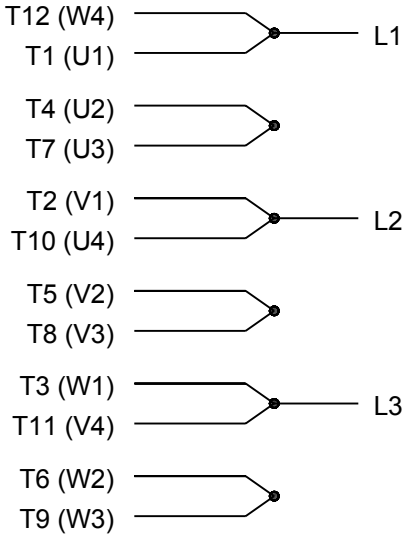
		TOLERANCES UNLESS SPECIFIED				DRAWN	
		DEC	INCHES			TLB 02-04-1988	
8	MODELED IN SOLIDWORKS & ADDED F2 VIEW MU 97811	JJB	11/2/2010	X	±.1	CHK FG 02-04-1988	
7	UPDATED FRAME & CONDUIT BOX CN 24390	KL	4/4/2005	XX	±.03	APPR ML 02-04-1988	
6	REDRAWN IN AUTOCAD	TAT	6/29/2004	ML	±.005	SCALE 1:4	
5	REDRAWN ON CAD	TLB	2/4/1988	XXXX	±.0005	REF	
				ANG	±7°30'	FMF	
				FINISH		PAGE OF	
				PREV		REV	
				NETWORK FILE NAME	SS508618	REV	

DASH	FRAME	B	C	AG	2F	BS
1400	364TSC	13.25	26.50	23.00	11.25	5.62
1500	365TSC	14.25	27.50	24.00	12.25	6.12

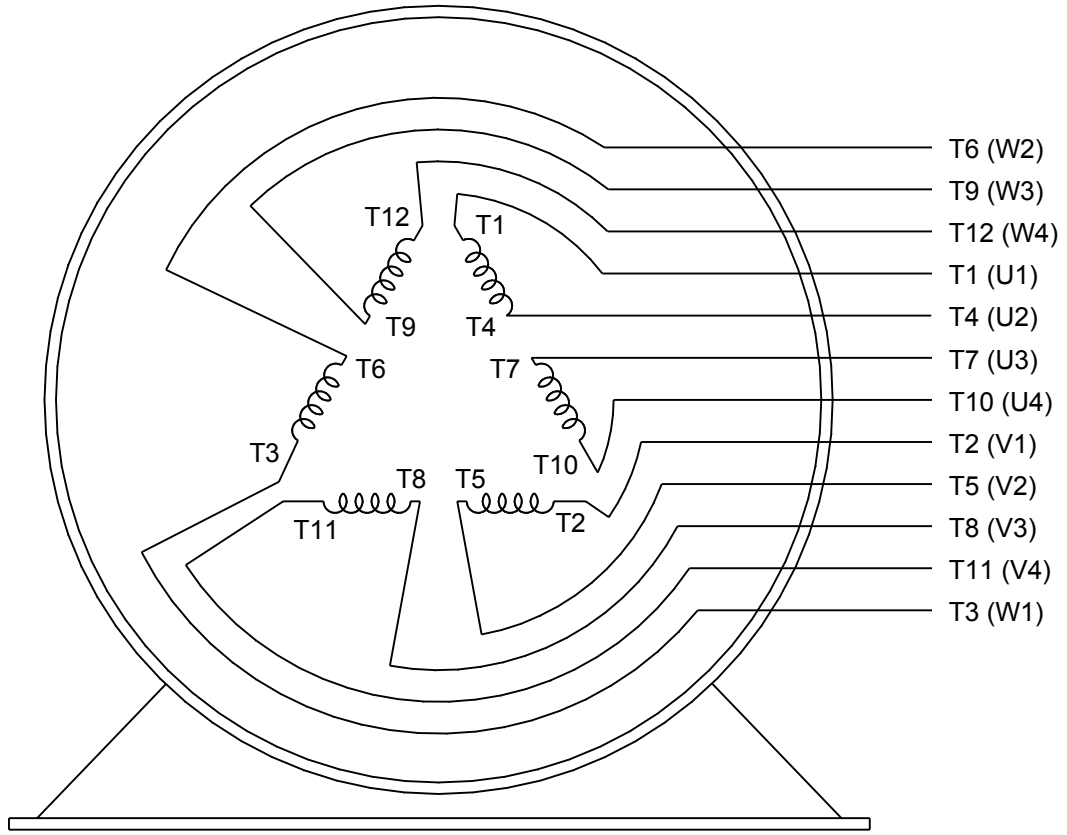




### LOW VOLTAGE

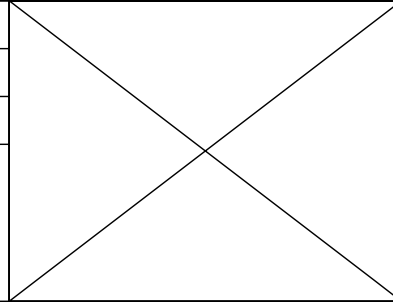


### HIGH VOLTAGE



### VIEW OF TERMINAL END

DRAWING REVISION <b>K</b>	REVISION BY <b>AJW</b>	DATE <b>07-17-2015</b>
ECO <b>ECO-0081632</b>	APPROVED BY <b>T. VUE</b>	DATE <b>07-17-2015</b>
ECO DESCRIPTION <b>REV'D IEC MARKINGS PER IEC 60034-8</b>		
<small>COPYRIGHT REGAL BELOIT AMERICA, INC. ALL RIGHTS RESERVED.                  PROPRIETARY AND CONFIDENTIAL INFORMATION - THIS DOCUMENT IS THE PROPERTY OF                  REGAL BELOIT AMERICA, INC. ("OWNER") AND CONTAINS OWNER'S PROPRIETARY                  INFORMATION. ANY PERSON, CORPORATION OR OTHER FIRM RECEIVING IT IS DEEMED,                  BY RECEIVING IT, TO AGREE THAT IT, AND/OR ANY PART OF IT, SHALL NOT BE DISCLOSED                  TO ANY PERSON, CORPORATION OR OTHER ENTITY, DUPLICATED, AND/OR USED, EXCEPT                  AS EXPRESSLY APPROVED IN WRITING IN ADVANCE BY OWNER. THIS DOCUMENT SHALL                  BE RETURNED TO OWNER UPON REQUEST. IT MAY BE SUBJECT TO CERTAIN                  RESTRICTIONS UNDER APPLICABLE EXPORT CONTROL LAWS AND REGULATIONS.</small>		



DRAWN BY <b>LZ</b>	<b>Regal Beloit America, Inc.</b>	
DATE <b>01-12-1994</b>		
APPROVED BY <b>GK</b>	DESCRIPTION <b>CONN DIAGRAM-EXTERNAL</b> <b>3Ø-2/1 DELTA-12 LEADS</b>	
DATE <b>01-14-1994</b>		
REFERENCE	MATERIAL	PROCESS/FINISH
THIRD ANGLE PROJECTION	SIZE <b>A</b>	DRAWING NUMBER <b>EE7308AA</b>
		SHEET <b>1 OF 1</b>



Data Sheet

3651STD56074



3651STD56074  
 Submission  
 Data @ 460 V

Date: 6/29/2017

Customer:  
 Attention:  
 Submitted by:

FAREEDA DUDEKULA

Motor Load Data

Load	0%	25%	50%	75%	100%	115%	125%	LR
Current (Amps)	28.0	34.5	49.5	67.5	87.0	100	109	542
Torque (ft-lb)	0.00	55.0	110	166	222	255	278	375
RPM	1800	1795	1790	1785	1780	1,775	1772	0
Efficiency (%)		92.4	95.0	95.0	95.0	95.0	94.5	
P.F. (%)	5.0	55.0	75.5	82.0	85.0	85.5	85.5	35.0

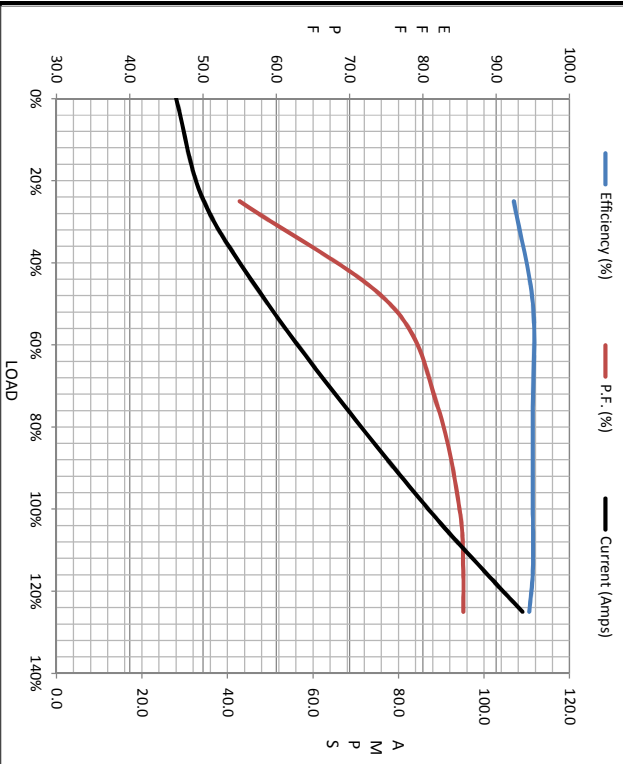
Motor Speed Data

	LR	Pull-Up	BD	Rated	Idle
Speed (rpm)	0	900	1700	1780	1800
Current (Amps)	542	500	325	87.0	28.0
Torque (ft-lb)	375	350	575	222	0.00

Information Block

HP	75.0
Sync. RPM	1800
Frame	365
Enclosure	DP
Construction	TDS
Voltage	30/460#190/38 V
Frequency	60 Hz
Design	A
LR Code letter	G
Service Factor	1.15
Temp Rise @ FL	45 °C
Duty	CONT
Ambient	40 °C
Elevation	1,000 feet
Rotor/Shaft wk <sup>e</sup>	15.0 Lb-Fe
Rel Wdg	T3654147 NONE
Sound Pressure @ 1M	75 dBA
VFD Rating	NONE
Outline Dwg	B-SS508618-1500
Conn. Diag	A-EET308AA
Additional Specifications:	
0	
0	

EQUIV CKT (OHMS / PHASE)				
R1	R2	X1	X2	Xm
0.0560	0.0340	0.3450	0.4010	8.6550



Speed - Torque Curve

